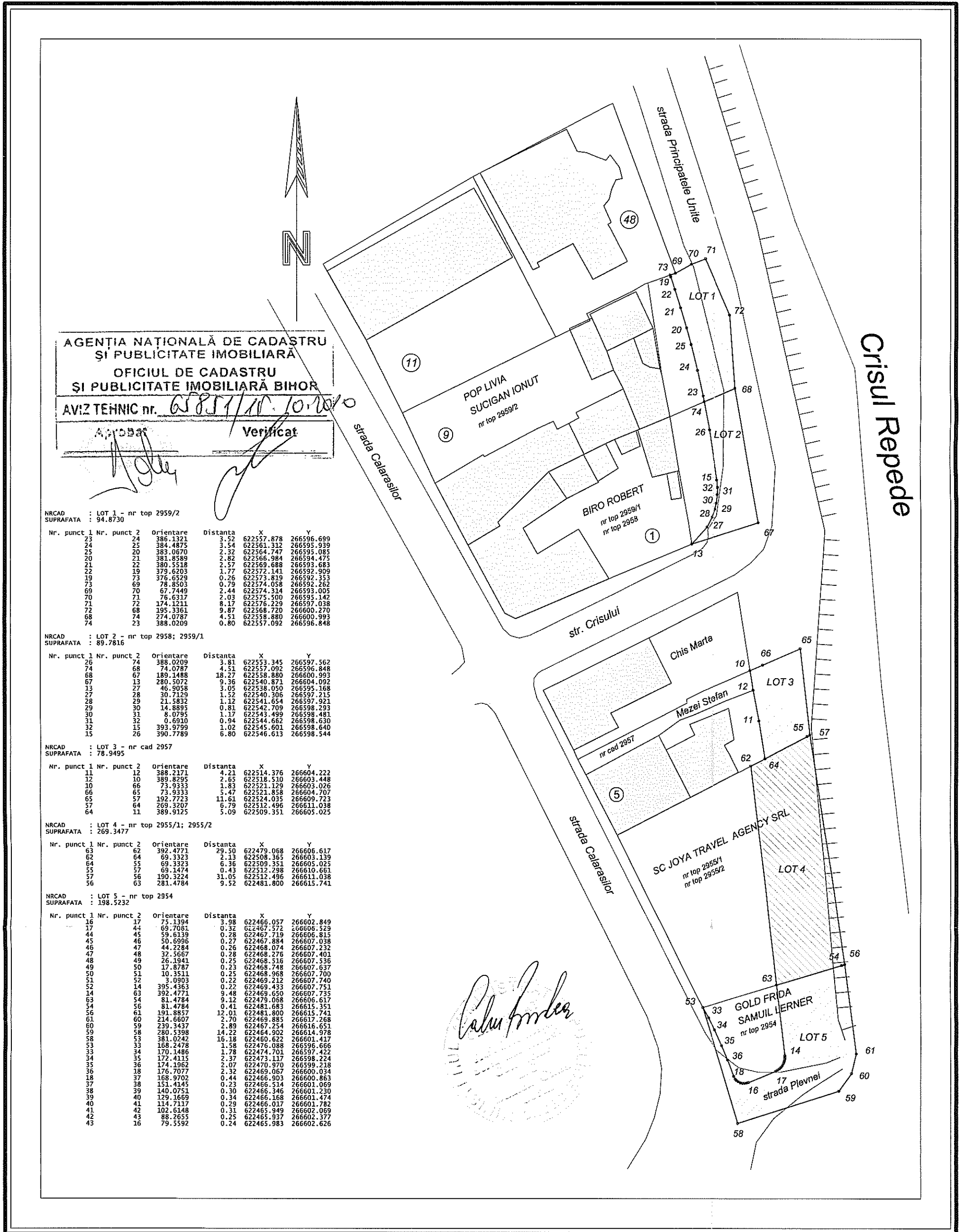


**PLAN DE SITUATIE**

Privind coridorul de expropriere pentru obiectivul de investitii "Modernizarea strazii Principatele Unite tronson Pod pietonal – Pod Decebal"

SCARA 1:500



AGENCIJA NAȚIONALĂ DE CADASTRU  
ȘI PUBLICITATE IMOBILIARĂ  
OFICIUL DE CADASTRU  
ȘI PUBLICITATE IMOBILIARĂ BIHOR  
AVIZ TEHNIC nr. 6581/10.10.2010  
Aprobat Verificat

**NRCAD LOT 1 - nr top 2959/2**  
SUPRAFATA : 94.8730

Nr. punct 1	Nr. punct 2	Orientare	Distanța	X	Y
23	25	386.1321	3.52	622567.878	266596.699
24	25	384.4875	2.54	622561.312	266595.939
25	20	383.0670	2.32	622564.747	266595.085
20	21	381.8589	2.82	622566.984	266594.475
21	22	380.5518	2.57	622569.688	266593.683
22	19	379.6203	1.77	622572.141	266592.909
19	73	376.6529	0.26	622573.819	266592.353
73	69	78.8503	0.79	622574.058	266592.262
69	70	67.7449	2.44	622574.314	266593.005
70	71	76.6317	2.03	622575.500	266595.142
71	72	174.1211	8.17	622576.229	266597.038
72	68	195.3361	9.87	622568.720	266600.270
68	74	274.0787	4.51	622558.880	266600.993
74	23	388.0209	0.80	622557.092	266596.848

**NRCAD LOT 2 - nr top 2958; 2959/1**  
SUPRAFATA : 89.7816

Nr. punct 1	Nr. punct 2	Orientare	Distanța	X	Y
26	74	388.0209	3.81	622553.345	266597.562
74	68	74.0787	4.51	622557.092	266596.848
68	67	189.1488	18.27	622558.880	266600.993
67	13	280.5072	9.36	622540.371	266604.092
13	27	46.9058	3.05	622538.050	266595.168
27	28	30.7129	1.52	622540.306	266597.215
28	29	21.5832	1.12	622541.654	266597.921
29	30	14.8832	0.81	622542.709	266598.283
30	31	8.0795	1.17	622543.499	266598.481
31	32	0.6910	0.94	622544.662	266598.630
32	15	393.9799	1.02	622545.601	266598.640
15	26	390.7789	6.80	622546.613	266598.544

**NRCAD LOT 3 - nr cad 2957**  
SUPRAFATA : 78.9495

Nr. punct 1	Nr. punct 2	Orientare	Distanța	X	Y
11	12	388.2171	4.21	622514.376	266604.222
12	10	389.8295	2.65	622518.510	266603.448
10	66	73.9333	1.83	622521.129	266603.026
66	65	73.9333	5.47	622521.858	266604.707
65	57	192.7723	11.61	622524.035	266609.723
57	64	269.3207	6.79	622512.496	266611.038
64	11	389.9125	5.09	622509.351	266605.025

**NRCAD LOT 4 - nr top 2955/1; 2955/2**  
SUPRAFATA : 269.3477

Nr. punct 1	Nr. punct 2	Orientare	Distanța	X	Y
62	64	69.3323	29.50	622479.068	266606.617
64	55	69.3323	2.13	622508.365	266603.139
55	57	69.1474	6.36	622509.351	266605.025
57	56	190.3224	0.43	622512.298	266610.661
56	63	281.4784	31.05	622512.496	266611.038
63	56	281.4784	9.52	622481.800	266615.741

**NRCAD LOT 5 - nr top 2954**  
SUPRAFATA : 198.5232

Nr. punct 1	Nr. punct 2	Orientare	Distanța	X	Y
16	17	75.1394	3.98	622466.057	266602.849
17	44	69.7081	0.32	622467.572	266608.529
44	45	59.6139	0.28	622467.719	266606.815
45	46	50.6996	0.27	622467.884	266607.038
46	47	44.2284	0.26	622468.074	266607.232
47	48	32.5667	0.28	622468.276	266607.401
48	49	26.4941	0.25	622468.516	266607.536
49	50	17.8787	0.23	622468.748	266607.637
50	51	10.3511	0.25	622468.968	266607.700
51	52	3.0903	0.22	622469.212	266607.740
52	14	395.4363	0.22	622469.433	266607.751
14	37	392.4771	9.48	622469.650	266607.795
37	54	81.4784	9.12	622479.068	266606.617
54	56	81.4784	0.41	622481.683	266615.351
56	61	191.8857	12.01	622481.800	266615.741
61	60	214.6607	2.70	622469.885	266617.268
60	59	239.3437	2.89	622467.254	266616.651
59	58	280.5398	14.22	622464.902	266614.978
58	53	381.0242	16.18	622460.622	266601.417
53	33	168.2478	1.58	622476.088	266596.666
33	34	170.1486	1.78	622474.701	266597.422
34	35	172.4115	2.37	622473.117	266598.224
35	36	174.1962	2.07	622470.970	266599.218
36	18	176.7077	2.32	622469.067	266600.034
18	37	168.9702	0.44	622465.303	266600.863
37	38	151.4145	0.23	622466.514	266601.069
38	39	140.0751	0.30	622466.346	266601.230
39	40	129.1669	0.34	622466.168	266601.474
40	41	114.7117	0.29	622465.617	266601.782
41	42	102.6148	0.31	622465.949	266602.069
42	43	88.2655	0.25	622465.937	266602.377
43	16	79.5592	0.24	622465.983	266602.626

LEGENDA:



Coridor de expropriere

Beneficiar: Municipiul Oradea

Intocmit: ing. BUZLEA Calin

Data: 15.10.2010